

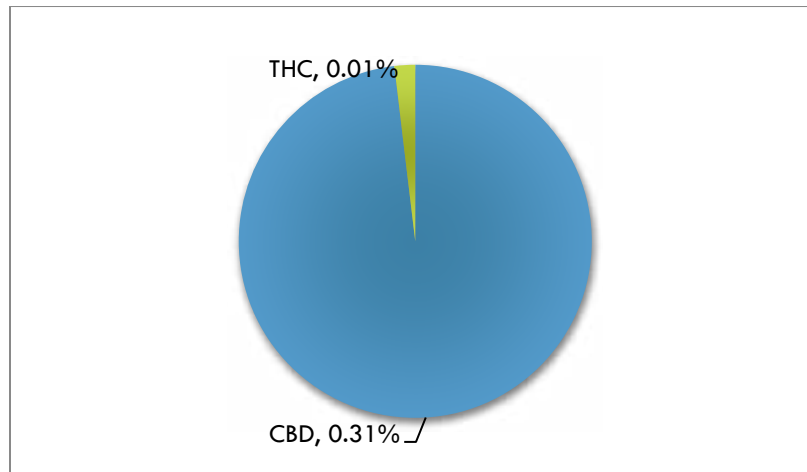


# POTENCY REPORT

**Material Tested:** CBD Compound  
**Testing Method:** UPLC-DAD  
**Date Tested:** 02/22/2018  
**Batch Number:** B0221840  
**Testing Analyst:** Ben Dennis; Reviewed by: Jeremy Riggle PhD  
**Total Product Mass:** 28g

ACIDIC COMPOUND mg/unit		NEUTRAL COMPOUND mg/unit	
<b>CBDA</b>	<0.1%	<b>CBD</b>	0.31%
<b>THCA</b>	<0.1%	<b>THC</b>	<0.1%
<b>CBCA</b>	<0.1%	<b>CBC</b>	<0.1%
<b>CBGA</b>	<0.1%	<b>CBG</b>	<0.1%
<b>CBNA</b>	<0.1%	<b>CBN</b>	<0.1%
<b>THCVA</b>	<0.1%	<b>THCV</b>	<0.1%
<b>CBDVA</b>	<0.1%	<b>CBDV</b>	<0.1%

Cannabinoid Content (wt/wt)



Mary's Nutritionals, LLC is a wholly owned subsidiary of Mary's Medicinals, LLC. Information provided in this report is for CBD rich hemp cultivated by Elite Botanicals, Loveland CO.

